

APEX

NORTH CAROLINA

Once known only as a stop along the railroad, **Apex (fondly known today as the “Peak of Good Living”)** is now a thriving community bustling with exceptional high-quality public schools, quick access to Research Triangle Park, and a robust parks and greenway system.

COMMUNITY DEMOGRAPHICS



Population growth: 50,719 (2017).
25% growth from 2010 - 2017.¹



Educational attainment: 61.7% received their bachelor's degree or higher.²



Median household income: \$95,314²



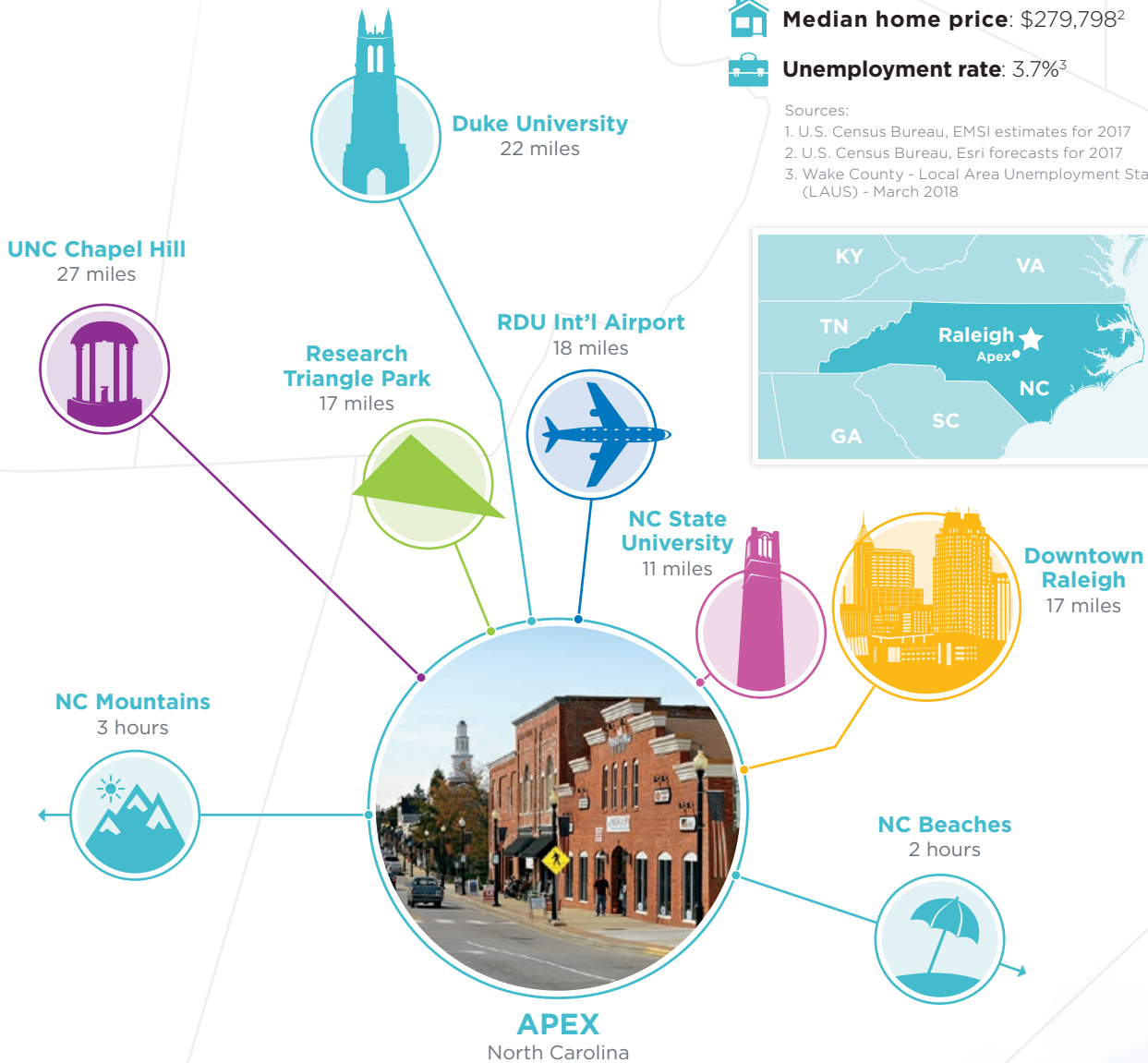
Median home price: \$279,798²



Unemployment rate: 3.7%³

Sources:

1. U.S. Census Bureau, EMSI estimates for 2017
2. U.S. Census Bureau, Esri forecasts for 2017
3. Wake County - Local Area Unemployment Statistics (LAUS) - March 2018



MAJOR EMPLOYERS

- Apex Tool Group
- ATI Industrial Automation
- Dell Technologies
- Polyzen, Inc.
- Tipper Tie



KEY INDUSTRIES

- Advanced Manufacturing
- Entrepreneurism
- Information Technology
- Life Sciences
- Technology

Major corporations like Apex Tool Group provide competitive wages to citizens in our community.



New industry recruitment is a vital part of our local economy.

Greenways, interactive parks and recreation programs, and the upcoming 92-acre Pleasant Park all contribute to the high quality of life found in Apex.



#1 Fastest Growing Suburb in America

Realtor.com, 2018



#10 Suburban Hotspot in the U.S.

Realtor.com, 2017



#3 Best Suburb to Live in NC

Niche, 2017

To learn more about our growing business community, or living in Apex, please contact us or visit us online.



Wake County Economic Development
800 S. Salisbury St. | Raleigh, NC 27602
919-664-7042 | raleigh-wake.org



Town of Apex – Economic Development
73 Hunter Street | PO Box 250 | Apex, NC 27502
919-372-7461 | www.apexeconomicdevelopment.org

[f](#) Apex Economic Development
[t](#) @ApexEconDev
[in](#) Apex Economic Development