

WAKE FOREST

NORTH CAROLINA

Located in northern Wake County, the Town of Wake Forest has been able to maintain its small-town feel while enjoying a serious growth spurt. It also remains **one of the safest communities in the State of North Carolina**. Technology and engineering firms have found the town to be a great place for business thanks in part to its location, quality of life and high percentage of residents with advanced degrees.

COMMUNITY DEMOGRAPHICS



Population growth: 43,076 (2017).
31% growth from 2010 - 2017!¹



Educational attainment: 54% received their bachelor's degree or higher²



Median household income: \$81,200²



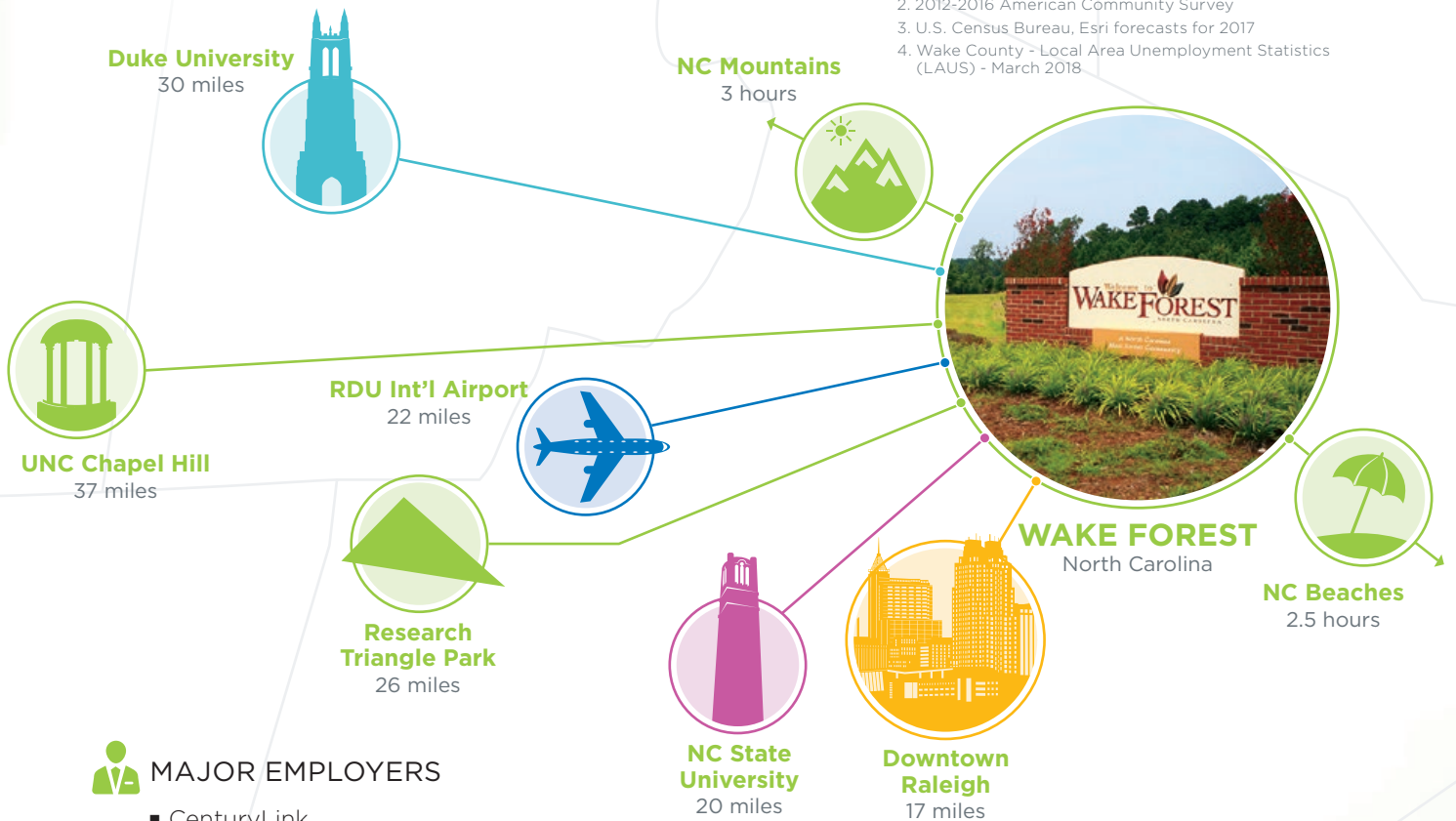
Median home price: \$258,234³



Unemployment rate: 3.7%⁴

Sources:

1. Town of Wake Forest Planning Department
2. 2012-2016 American Community Survey
3. U.S. Census Bureau, Esri forecasts for 2017
4. Wake County - Local Area Unemployment Statistics (LAUS) - March 2018



MAJOR EMPLOYERS

- CenturyLink
- PowerSecure
- Ultra Electronics Ocean Systems
- East Coast Drilling & Blasting



KEY INDUSTRIES

- Advanced Manufacturing
- Defense Technology
- Life Sciences & Healthcare
- Wireless Research/IoT



The NC Wireless Research Center offers a safe and trusted facility for wireless testing and innovation.



Wake Forest's state-of-the-art Town Hall is a great reflection of the community's recent growth.



Wake Forest boasts over 50 outdoor community events each year attracting thousands from around the Triangle.



203% growth rate from 2000 to 2017



Wake Forest is home to 561 acres of parks and open space



#11 Best Place to Live in NC

Niche, 2018

To learn more about our growing business community, or living in Wake Forest, please contact us or visit us online.



WAKE

Wake County Economic Development
800 S. Salisbury St. | Raleigh, NC 27602
919-664-7042 | raleigh-wake.org



WAKE FOREST
BUSINESS & INDUSTRY PARTNERSHIP

Wake Forest Business & Industry Partnership
301 S. Brooks St. | Wake Forest, NC 27587
919-435-9420 | discoverwakeforest.org

 @DiscoverWF